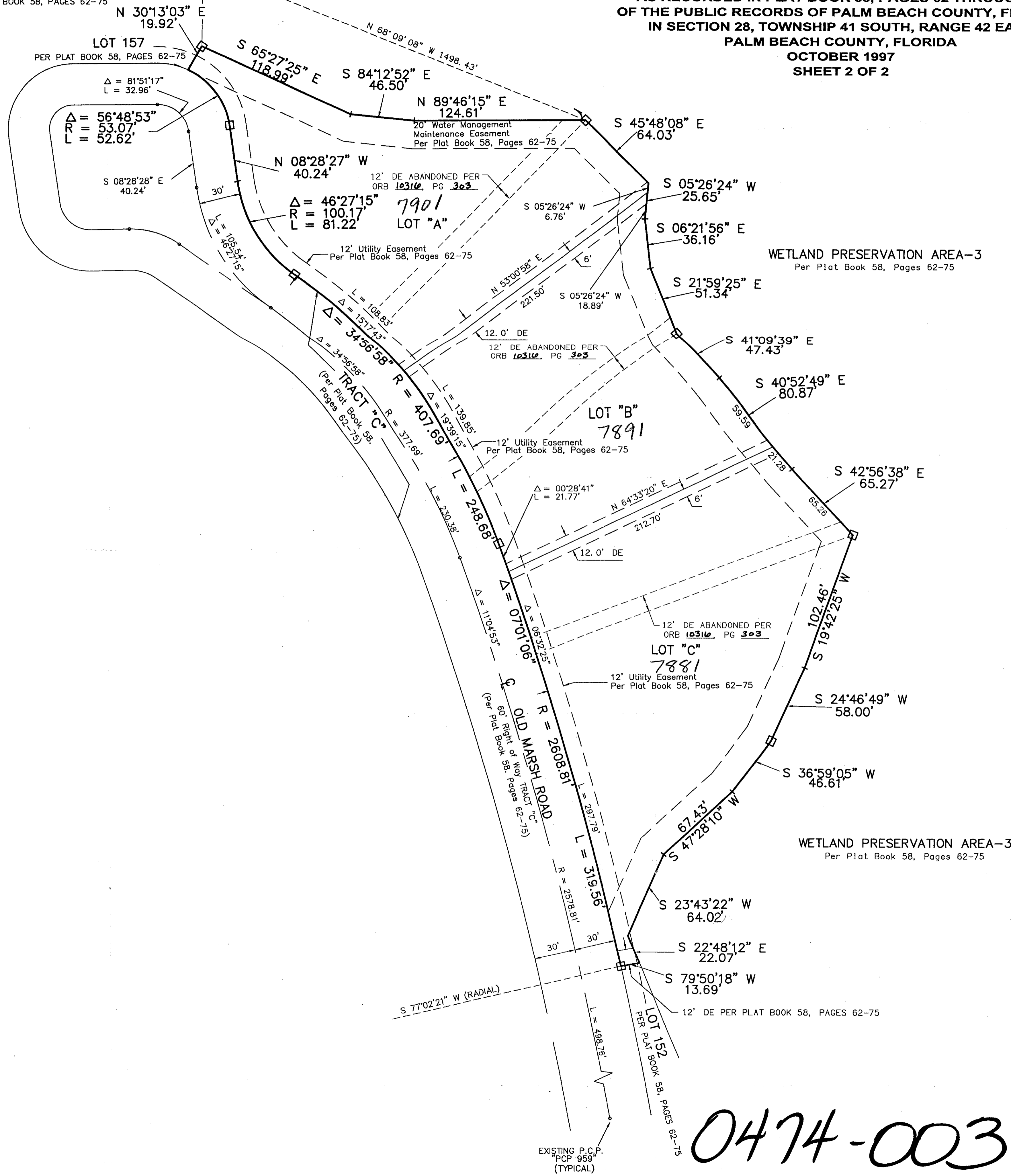


FOUND BRASS DISC
 PALM BEACH COUNTY
 SURVEY DEPARTMENT
 WEST QUARTER CORNER
 SECTION 28, TOWNSHIP 41
 SOUTH, RANGE 42 EAST
 NE CORNER OF OLD MARSH GOLF CLUB
 PER PLAT BOOK 58, PAGES 62-75

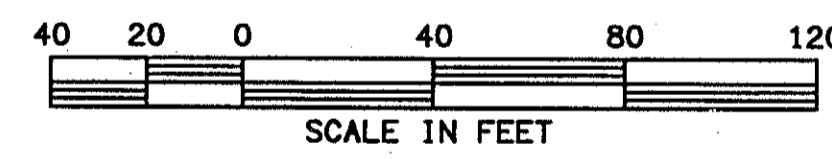
0474-003

160

OLD MARSH GOLF CLUB REPLAT No. 3
 A REPLAT OF LOTS 153, 154, 155 AND 156 OF OLD MARSH GOLF CLUB,
 A PLANNED UNIT DEVELOPMENT,
 AS RECORDED IN PLAT BOOK 58, PAGES 62 THROUGH 75
 OF THE PUBLIC RECORDS OF PALM BEACH COUNTY, FLORIDA
 IN SECTION 28, TOWNSHIP 41 SOUTH, RANGE 42 EAST
 PALM BEACH COUNTY, FLORIDA
 OCTOBER 1997
 SHEET 2 OF 2



- LEGEND:
- = PERMANENT REFERENCE MONUMENT "P.L.S. 4828"
 - R = RADIUS
 - L = ARC LENGTH
 - Δ = DELTA (CENTRAL ANGLE)
 - PC = POINT OF CURVATURE
 - PT = POINT OF TANGENCY
 - PSM = PROFESSIONAL SURVEYOR & MAPPER
 - PLS = PROFESSIONAL LAND SURVEYOR
 - UE = UTILITY EASEMENT
 - DE = DRAINAGE EASEMENT
 - N = NORTHING (GRID)
 - E = EASTING (GRID)
 - (c) = CALCULATED
 - (r) = RADIAL



NOTE: THE 20' WATER MANAGEMENT MAINTENANCE EASEMENT SHOWN HEREON IS DEDICATED TO THE NORTHERN PALM BEACH COUNTY WATER CONTROL DISTRICT (NOW NORTHERN PALM BEACH COUNTY IMPROVEMENT DISTRICT) PER PLAT BOOK 58, PAGES 62-75.

PET. 85-42
 5/1/13

712
 717

SECTION 28, TOWNSHIP 41 SOUTH, RANGE 42 EAST
 DIVISION # Old Marsh Golf Club
 BOOK 58 PAGE 160
 FLOOD MAP # 15 C
 FLOOD ZONE A
 TOWING REF # 00
 QUAD # 42
 SE 05-42a
 ZIP CODE 33412
 FUD NAME Old Marsh Golf Club

0474-003

82/160

OLD MARSH GOLF CLUB REPLAT No. 3	
 NICK MILLER, INC. Surveying & Mapping Consultants	SHEET NO. 2 OF 2
SUITE 105 2560 RCA BLVD. PALM BEACH GARDENS, FLORIDA 33410 TEL 561 627-5200 FAX 561 627-0983 D.B.P.R. LICENSED BUSINESS No. 4318	SCALE: 1" = 40' DATE: OCTOBER 1997 JOB NO. 97017 FILE: 97017-1.DWG